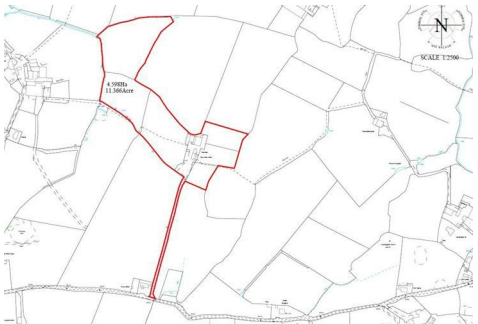


EGERTON ESTATES



Plas Y Brain , Amlwch, LL68 0SN

Offers In The Region Of £635,000

A fine opportunity to acquire a small farm estate situated in a peaceful rural position near the north coast of Anglesey, and enjoying fine distant views of the coast and Mynydd y Garn. Within the last 10 years, Plas y Brain has been significantly developed to include the refurbishment of the original farmhouse, together with the building of both a 2 bedroom holiday bungalow, and also a 1 bedroom annex to the farmhouse. In addition there are two large and modern agricultural sheds, and the farmstead is positioned in around 11 acres of quality farmland. With scope for varying uses and with excellent income potential from both the holiday bungalow, farm buildings and land, Plas y Brain must be viewed to appreciate the modernised dwellings, farm buildings and land.

For sale with no onward chain.

Plas Y Brain Farmhouse

The original farmhouse situated between Plas y Brain Uchaf to one side and Plas y Brain Isaf (Annex) to the other.

Rear Utility Porch 7'3" x 6'11" (2.21 x 2.11)

With worktop surface with space under for a washing machine, large cupboard, tiled floor and double glazed door to the rear:

Living Area 15'4" x 10'0" (4.69 x 3.07)



A naturally light room with double opening doors to the front giving access onto a paved patio and with distant sea views and also of Mynydd Y Garn. Large 'walk-in' inglenook recess with woodburning stove on a tiled hearth. Light stone tiled floor, 'Dimplex' programmable electric heater, wall mounted t.v fixing, staircase to the first floor. Wide opening to :

Kitchen 8'9" x 7'4" (2.68 x 2.26)



With a timber range of base and wall units with worktop surfaces and tiled surround. Stainless steel sink unit under a rear aspect window, electric cooker point, recess for an under counter fridge and dishwasher, tiled floor.

Bathroom 7'0" x 6'0" (2.14 x 1.85)



With a white suite comprising a panelled steel bath with electric shower over and glazed shower screen. Wash basin, w.c, tiled floor, wall mounted electric fan heater.

First Floor Landing

With adequate space for a small study area.

Cloakroom

With wash basin, WC, wall mounted fan heater.

Bedroom 1 11'11" x 8'7" (3.64 x 2.62)

With a Dimplex programmable electric heater, hot water cylinder, rear aspect window.

Bedroom 2 11'6" x 8'6" (3.51 x 2.61)



With Dimplex programmable electric heater, rear aspect window.

Plas y Brain Isaf (Annex)

Built from new within the last 10 years adjoining the farmhouse, being self contained with independent access to both front and rear, but ancillary to the main house.

Living/Kitchen 17'0" x 12'7" (5.20 x 3.86)

Being open plan and with a light timber laminated

floor covering.

The kitchen includes a modern range of base and wall units in a light grey finish with contrasting worktop surfaces and tiled surround. Electric cooker point with extractor over, stainless steel sink unit.

The living area to the front has patio doors which open onto a paved patio area enjoying fine views.. Programmable electric heater.

Utility Room 6'11" x 4'0" (2.11 x 1.23)

With fitted worktop with tiled surround and space under for a washing machine. Through access to:-

Wet Room 6'11" x 3'9" (2.11 x 1.15)



Having fully panelled walls and ceiling, and with a shower area with electric shower control. Wash basin, WC, wall mounted electric towel radiator.

First Floor Bedroom 12'11" x 9'2" (3.94 x 2.81)

Having both a gable wall indow and velux window.

Plas y Brain Uchaf

Built from new in the last 10 years on the site of former farm buildings, and with planning consent for holiday use only.

Kitchen/Living Room 17'0" x 12'7" (5.20 x 3.86)

Being open plan.

Rear Porch/Utility 8'0" x 6'3" (2.44 x 1.91)

Having a double glazed rear entrance door, fitted worktop surface with space under for a washing machine. Linen cupboard with hot water tank, light stone floor tiles, coat hanging area.

Living/Kitchen 24'10" x 17'5" (7.58 x 5.31)

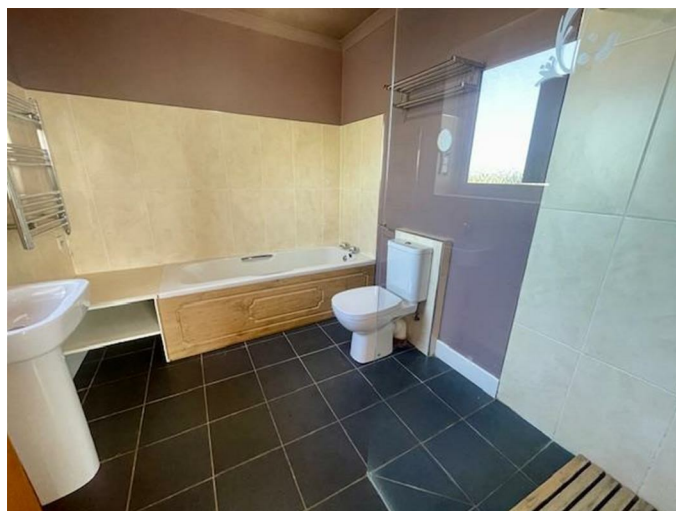


A superb open plan room enjoying delightful rural and sea views to the front with the living area having double glazed patio doors leading onto a front paved patio area.

The kitchen has very extensive base and wall units in a light cream finish with contrasting worktop surfaces and tiled surround., as well as an extended work surface serving as a small breakfast bar area. Integrated ceramic hob with extractor over and electric oven under. Larder style cupboard, stainless steel sink unit under a front aspect window, programmable electric room heater, light stone effect tiled floor.

The living area has a woodburning stove standing on a raised hearth, oak style flooring, programmable electric room heater, tv shelf, dual aspect windows.

Bathroom 9'3" x 7'4" (2.83 x 2.25)



Having a modern white suite comprising of a panelled bath, shower enclosure with electric shower control, WC, tiled floor, heated towel radiator.

Bedroom 1 11'5" x 8'6" (3.49 x 2.61)

With light timber floor covering, front aspect window, wall mirror.

Bedroom 2 11'5" x 8'7" (3.49 x 2.62)

With light timber floor covering, double glazed door to the rear.

Outside



A stone gravelled track leads to a very spacious open farmyard with ample parking area and access to the fields to the front. The track continues along the front of the houses and leads to two modern agricultural sheds. This area gives ample parking storage areas and also access to four small general store sheds found to the rear of the houses. In addition, the areas immediate to the front and rear of the houses are paved with water and power, and with the front patios enjoying delightful westerly sea views and over farmland to Mynydd Y Garn.

Shed One 43'7" x 27'10" (13.3 x 8.5)



With concreted ramped access and fully concreted floor. Front recess for big bale feeding, water trough.

Shed Two 60'8" x 43'11" (18.5 x 13.4)



Being the main shed with central divide, concreted floor. Wintering area with feeding barriers to both front and rear and mains water trough. Second Wintering area with recessed big bale feeding area and side door to a cattle collection pen. Lean-to (4.4 x 4.)3 suitable for machinery/feed storage

Land



Extending to just over 11.36 acres (4.598 hectares) in total, the majority of the farmland is found to the front of the farmstead, considered to be in very good heart and the majority capable of cultivation, with the boundaries noted to be stock proof and mains water troughs provided to most enclosures. There is also land to the rear in two main enclosures, with easy access from the wintering sheds. A footpath crosses the land

Services

Mains water and electricity. Solar panels provided. Private Drainage (2015) and which serves all 3 units.

Planning Considerations

Plas y Brain Uchaf is a modern bungalow attached to the main house. Planning Consent was granted in 2015 but its use is restricted to holiday use only and cannot be used as a permanent dwelling. The annex is regarded as ancillary accommodation to the main farmhouse

Tenure

The property is understood to be freehold and is offered for sale with vacant possession. This will be confirmed by the Vendor's conveyancer.

Council Tax

Plas y Brain House:- Band B

Plas y Brain Uchaf (holiday bungalow) :- Rateable
Value £1725.00

Energy Performance

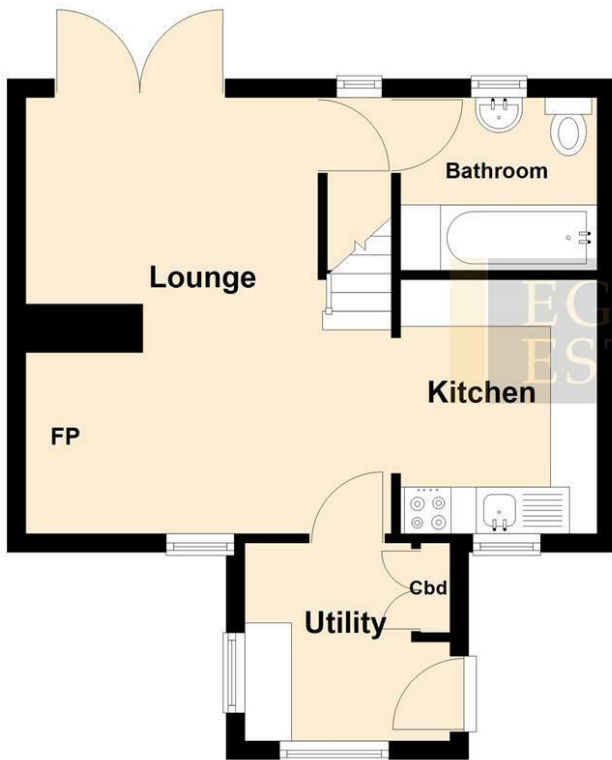
Plas y Brain House:- Band D

Plas y Brain Uchaf (Holiday bungalow) :- Band C

Floor Plan

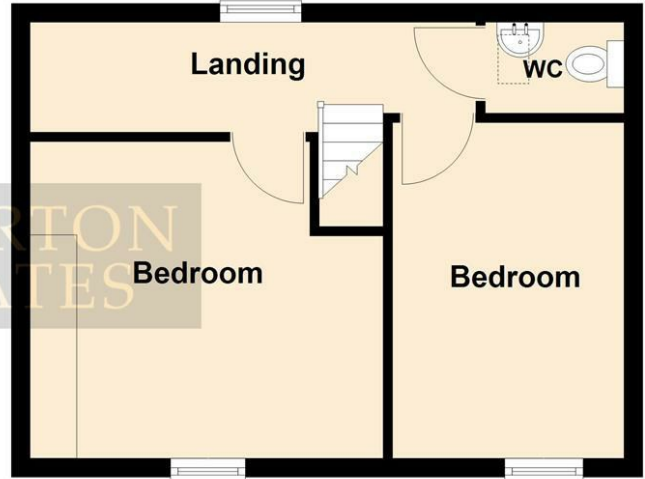
Ground Floor

Approx. 33.6 sq. metres (361.2 sq. feet)



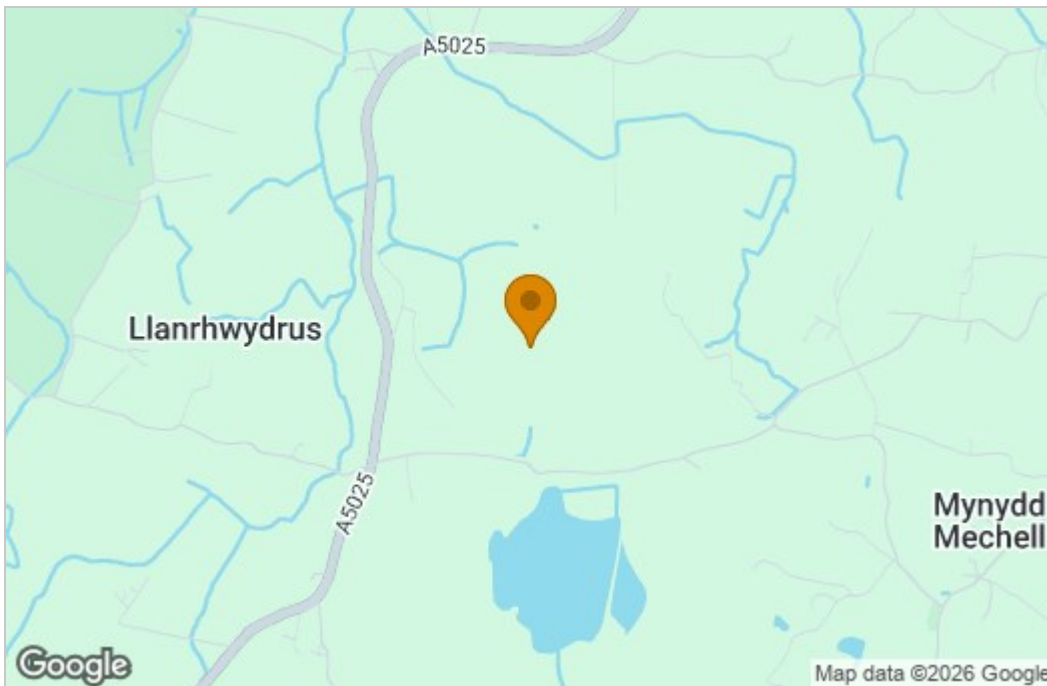
First Floor

Approx. 29.8 sq. metres (320.8 sq. feet)

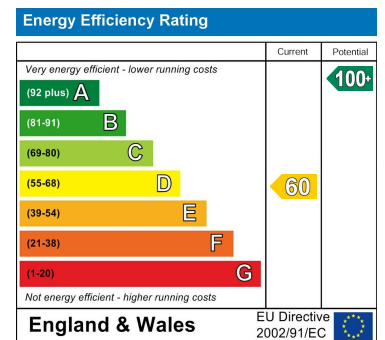


Total area: approx. 63.4 sq. metres (682.1 sq. feet)

Area Map



Energy Efficiency Graph



These particulars, whilst believed to be accurate are set out as a general outline only for guidance and do not constitute any part of an offer or contract. Intending purchasers should not rely on them as statements of representation of fact, but must satisfy themselves by inspection or otherwise as to their accuracy. No person in this firm's employment has the authority to make or give any representation or warranty in respect of the property.

The Property Centre, Padworth House, Benllech, Anglesey, LL74 8TF

Tel: 01248 852177 Email: enquiries@egerton-estates.co.uk <https://www.egerton-estates.co.uk>